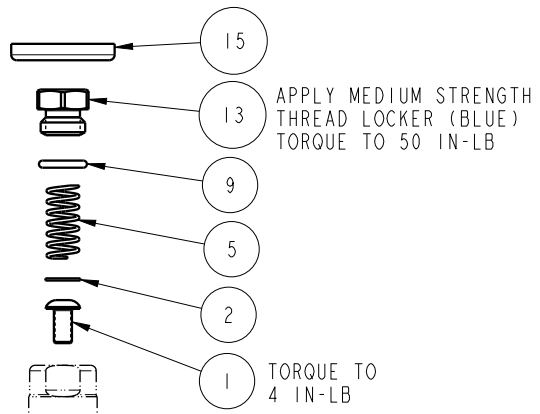
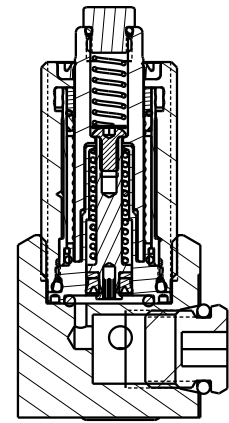




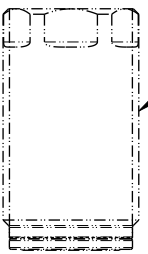
SEE IS1023 FOR SERVICE INSTRUCTIONS.  
 LUBRICATE ALL SEALS WITH CLEAN HYDRAULIC OIL  
 PRIOR TO ASSEMBLY.  
 DO NOT USE SILICONE BASED LUBRICANTS.



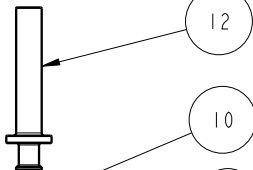
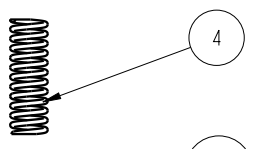
APPLY MEDIUM STRENGTH  
 THREAD LOCKER (BLUE)  
 TORQUE TO 50 IN-LB

TORQUE TO  
 4 IN-LB

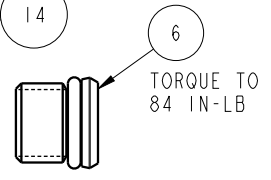
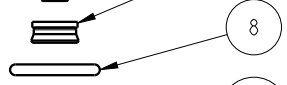
PLUNGER  
 These work supports are fully  
 rebuildable to full factory original  
 capacity by any authorized Vektex repair  
 facility. All seals can be replaced by  
 any authorized repair facility.



BODY ASSEMBLY  
 -NOT REPLACEABLE  
 TORQUE TO 20 FT-LB



ASSEMBLE LIP  
 SIDE TOWARD  
 BOTTOM OF PISTON



TORQUE TO  
 84 IN-LB



TORQUE TO  
 11 IN-LB

NO	QTY	PART NO	DESCRIPTION	STD SEAL KIT	SPRING KIT
1	1	21410129	BHCS, 3-48 x 3/16, SELFLOCK, SST		
2	1	21430043	WASHER		
3	1	21500019	SCREW, CAP, BTNH, M3 X 6, ALY		
4	1	23350141	SPRING, COMPRESSION		X
5	1	23350142	SPRING, COMPRESSION		X
6	1	30601144	PLUG, SOCH, SAE 4		
7	1	39050042	O-RING, (-O11)	X	
8	1	39051171	O-RING, 9.53mm X 1.55mm	X	
9	1	39051172	O-RING, 4.7mm X 1.0mm	X	
10	1	39052071	SEAL, U-CUP & BU RING, 2.63 X 1.53 X 2.03, 85, AU	X	
11	1	39055011	SEAL, BONDED, M3		
12	1	81010402	PISTON, WS, FA, HC, 1000		
13	1	81040400	BOLT, CONTACT, WS, FA, HC, 1000		
14	1	91040620	KIT, BASE, WS, FA, MM, HC, 1000		
15	1	39V53004	WIPER, PRESS-IN, (3/8), VBGV	X	
N/A	N/A	60100142	KIT, SEAL, WS, FA, BM, HC, 1000	NOTED	N/A
N/A	N/A	61100226	KIT, SPRING, WS, FA, HC, 1000	N/A	NOTED
N/A	N/A	IS1023	INSTRUCTION SHEET	N/A	N/A

### PARTS LIST



ASSEMBLIES AFFECTED  
 10080420

PARTS LIST, ASSY, WS, FA, BM, HC, 1000

B	4993	RELEASE	RLK	12/7/22
REV	IN ACCORDANCE WITH ECN	EFFECTIVE DATE	REVISED BY	DATE
DRW BY:	ALS	<b>DRAWING STATUS: Released</b>		
DATE:	3/9/20	PRODUCTION APPROVED FOR RELEASED STATUS ONLY		

SIZE  
 A  
**PL1101**  
 REV  
 B

FORM FEG035\_PL\_ASIZE, REV. B

SHEET 1 OF 1